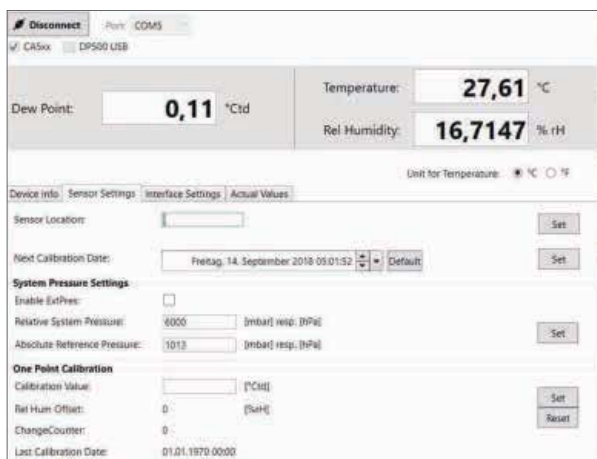
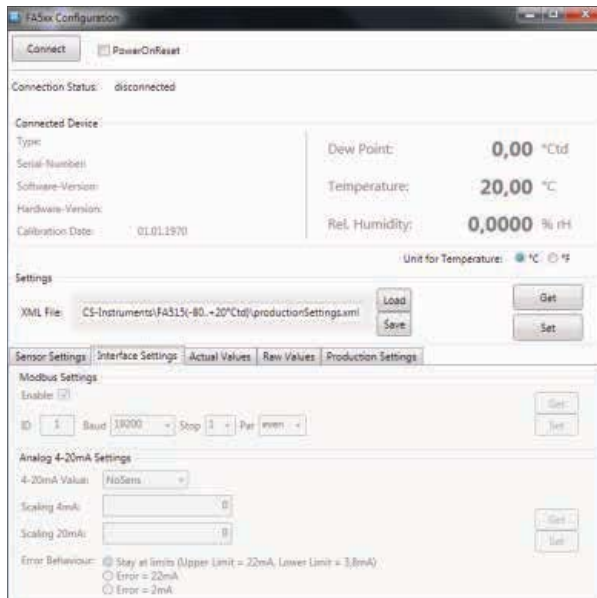


## CS Service Software

With the CS service software including the USB - Modbus interface adapter, the FA 510 / FA 515 / FA 500 dew point sensors can be configured via laptop / PC. The following settings can be made via CS Service Software:



- Scaling of the 4...20 mA analogue output
- Assignment of the measured variable to the analogue output (e.g. 4...20 mA = 0...10 g/m<sup>3</sup>)
- Available units: °Ctd, °Ftd, g/m<sup>3</sup>, mg/m<sup>3</sup>, ppmv/v, g/kg
- Reading out the firmware version, serial number, date of the last calibration
- One-point calibration (adjustment) of the sensors in the process. This requires a reference device
- Update of the sensor software (Firmware)
- Modbus settings as Modbus-ID, Baud rate, Stopbit, Parity



DESCRIPTION	ORDER-NO.
CS Service Software incl. PC connection set, USB connection and interface adapter to the sensor	0554 2007